



## **SPEEDY *airtec* – my first choice for applications in oil free environments**

With the SPEEDY *airtec*, STARK developed a pneumatically activated fast clamping lock for applications in oil free environments.

SPEEDY *airtec* stands out with

- high clamping force,
- operational safety at a pressure drop,
- optimized power curve,
- long service life,
- service friendly construction.

## Zero point mounting system 5000

### SPEEDY airtec

SPEEDY airtec is a pneumatically activated fast clamping lock. It is activated by a single compressed air connection with 6 bar - without pressure booster or auxiliary devices.

This newly developed mounting system has given the SPPEEDY airtec a clamping force of 20 kN.

The SPEEDY airtec is best suited for areas of application requiring oil free mounting systems, e.g in food processing, for medicine technology and where hygiene is of the highest priority.

The SPEEDY airtec is available in 4 versions. There is the standard version with support ring and a version with central locking. Index bores for the locking piston and mounts with integrated blow off, widen the range of application.

#### SPEEDY airtec with support ring

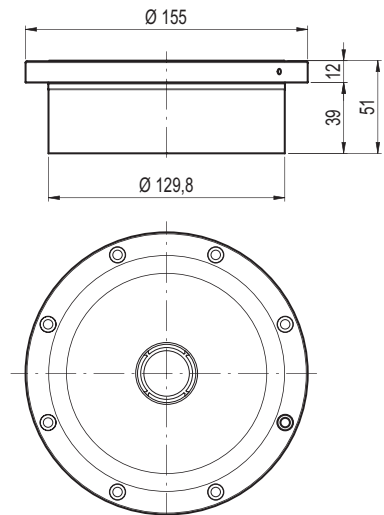


**Properties:**

Assembly module, air activated with support ring. Is mounted mechanically and released pneumatically. Combined with order no. 5000 102 it is suited for raised assembly.

**Areas of application:**

Especially for oil free plants, in clean rooms, medicine and food processing technologies.



Order no.	Designation	Clamping force	Operating pressure	Weight
5000 001	With support ring	20 kN	6 bar	4,80 kg

#### SPEEDY airtec with support ring and index bores

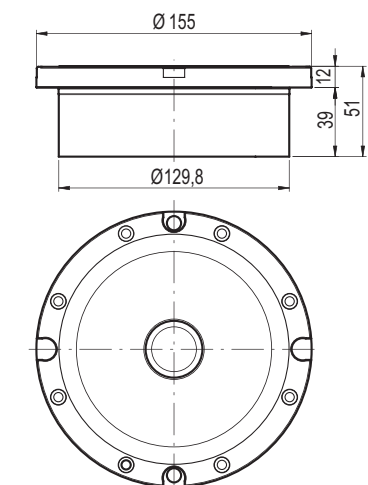


**Properties:**

Assembly module, air activated with support ring and 4 index bores. Is mounted mechanically and released pneumatically. Combined with order no. 5000 102 it is suited for raised assembly.

**Areas of application:**

Especially for oil free plants, in clean rooms, medicine and food processing technologies.



Order no.	Designation	Clamping force	Operating pressure	Weight
5000 002	With support ring and 4 index bores	20 kN	6 bar	4,80 kg

**SPEEDY airtec with central locking**

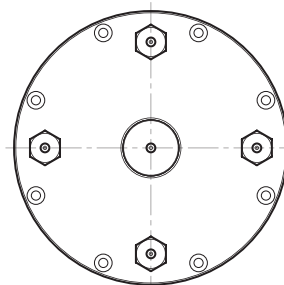
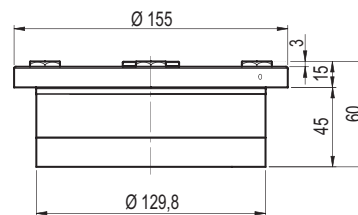


**Properties:**

Assembly module, air activated with central locking and mounts with blow off. Is mounted mechanically and released pneumatically.

**Areas of application:**

Especially for oil free plants, in clean rooms, medicine and food processing technologies.



Order no.	Designation	Clamping force	Operating pressure	Weight
5000 003	With central locking and support mounts	20 kN	6 bar	5,40 kg

**SPEEDY airtec with central locking, index bores**

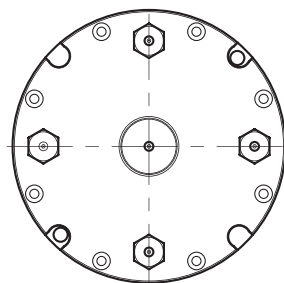


**Properties:**

Assembly module, air activated with central locking and mounts with blow off. 4 index bores. Is mounted mechanically and released pneumatically.

**Areas of application:**

Especially for oil free plants, in clean rooms, medicine and food processing technologies.



Order no.	Designation	Clamping force	Operating pressure	Weight
5000 004	With central locking, mounts and 4 index bores	20 kN	6 bar	5,40 kg

**SPEEDY airtec raised housing with clamping devices**

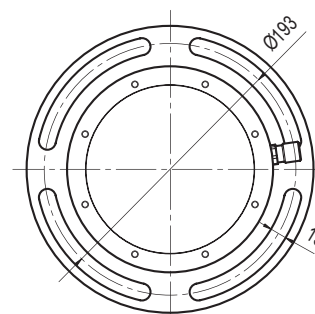
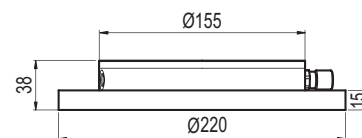


**Properties:**

Raised housing with clamping devices for flexible mounting on the machine table. Suited for the SPEEDY airtec order no. 5000 001, 5000 002.

**Areas of application:**

For raised assembly for oil free plants, in clean rooms, medicine and food processing technologies.



Order no.	Designation	Weight
5000 102	Raised housing with clamping devices	2,20 kg

## Retractable nipple

These retractable nipples are only suitable for the SPEEDY airtec zero point mounting system.

### Retractable nipple with zero point

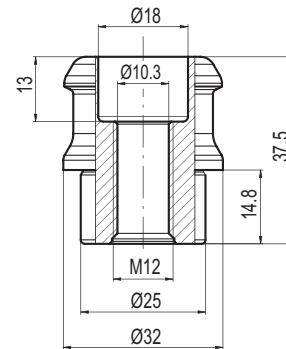


**Properties:**

Retractable nipple with zero point, including screw covers.

**Areas of application:**

Palettes, machine vices, chucks, jigs, workpieces-direct clamping.



Order no.	Designation	Weight
5000 009	Retractable nipple with zero point	0,13 kg

### Retractable nipple with compensation

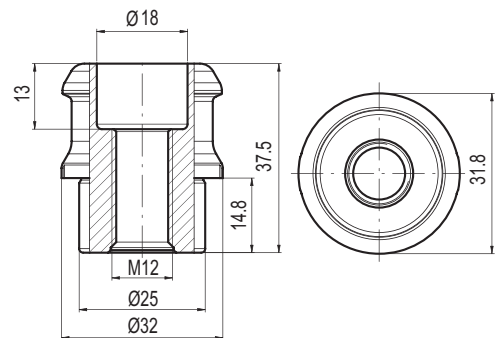


**Properties:**

Retractable nipple with compensation in one axis (sword form), including screw cover.

**Areas of application:**

Palettes, machine vices, chucks, jigs, workpieces-direct clamping.



Order no.	Designation	Weight
5000 010	Retractable nipple with compensation	0,13 kg

### Retractable nipple without centering

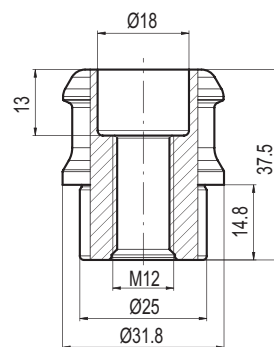


**Properties:**

Retractable nipple with compensation in all axis, including screw cover.

**Areas of application:**

Palettes, machine vices, chucks, jigs, workpieces-direct clamping.

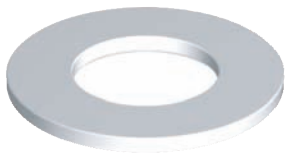


Order no.	Designation	Weight
5000 011	Retractable nipple without centering	0,13 kg

## Accessories

Suited for SPEEDY airtec with central locking (order no. 5000 003) and SPEEDY airtec with central locking and index bores (order no. 5000 004).

### Distancer

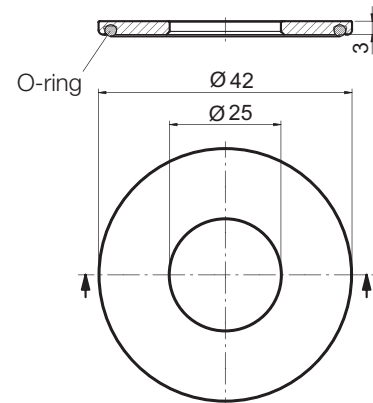


**Properties:**

Distancer with seal.

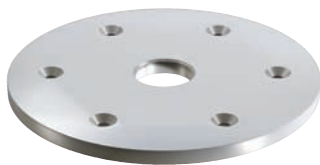
**Areas of application:**

Distancer for height compensation for SPEEDY airtec with central locking and support mount.



Order no.	Designation	Weight
804 269	Distancer for SPEEDY airtec	0,02 kg

### Washer

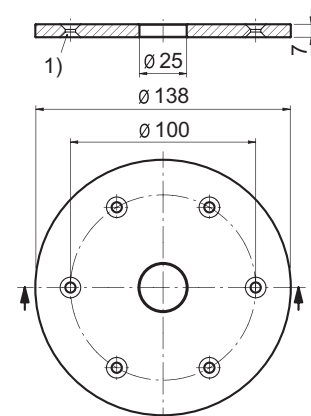


**Properties:**

Hardened washer

**Areas of application:**

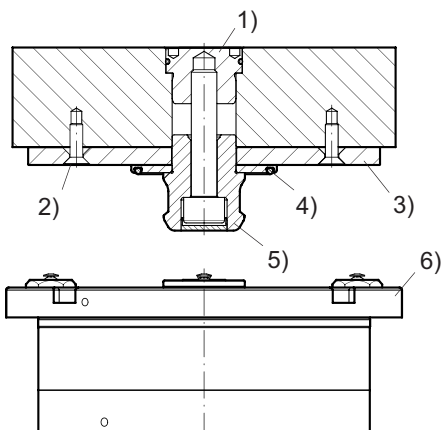
Washer for SPEEDY airtec. To use with non-hardened surfaces.



1) Recess for M5 - screw DIN 7991

Order no.	Designation	Weight
804 281	Washer for SPEEDY airtec	0,80 kg

### Sample application



SPEEDY airtec 5000 for permanent automatic production. Retractable nipple with distancer and hardened washer.

**Advantages:**

- Safe and reliable surface blow off
- Nearly no wear
- Surface control available with differential pressure, blocking air

- 1) Nipple mount
- 2) Countersunk head screw DIN 7991
- 3) Hardened surface

- 4) Distancer
- 5) Retractable nipple
- 6) SPEEDY airtec 5000

to 1) Nipple mount selectable from the top or from below. Tightening torque for:  
 M10 - screw = 45 Nm  
 M12 - screw = 70 Nm

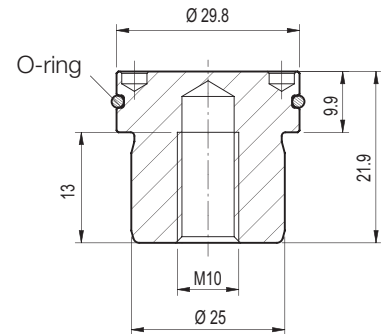
## Accessories

### Nipple mount version D



**Properties:**  
Nipple mount with O-ring.

**Areas of application:**  
Equipment palettes, handling palettes, adapter palettes.



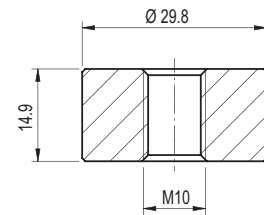
Order no.	Designation	Weight
804 267	Nipple mount version D	0,09 kg

### Nipple mount, version E



**Properties:**  
Hardened screw retainer.

**Areas of application:**  
Equipment palettes, handling palettes, adapter palettes.

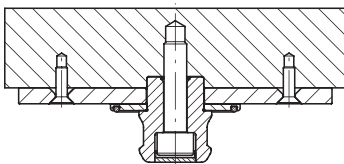


Order no.	Designation	Weight
804 266	Nipple mount, version E	0,07 kg

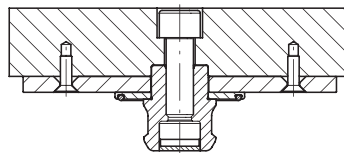
Versions D and E have the advantage that the fit diameter can be made with high precision on the upper side of the palettes in a single setting up operation.

### Mounting versions for retractable nipple

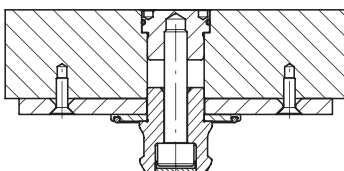
Version A



Version B



Version C



Version D

