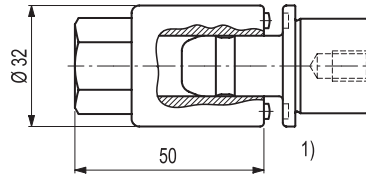
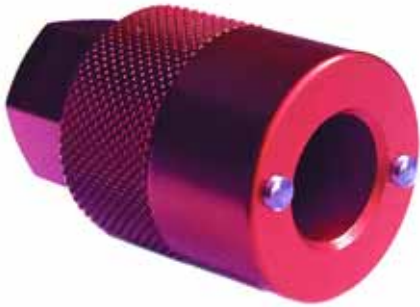




Retractable nipple key for SPEEDY 1000



1) Tightening torque for retractable nipples M8/M10 = 20Nm

Order no.	Description
804 254	Retractable nipple key for retractable nipple 1000
804 257	Socket 3/8" SW22 for retractable nipple

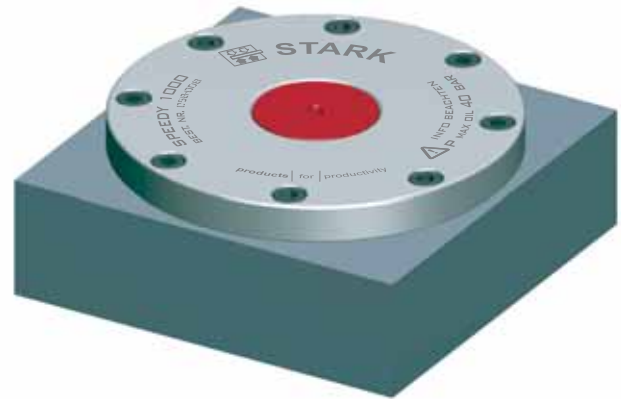
Torque wrench



Order no.	Range [Nm]	Description
804 255	5 - 50	Allen head 3/8", SW 4, SW 5, SW 6
804 256	20 - 100	Allen head 1/2", SW 10 Socket 1/2", SW 22



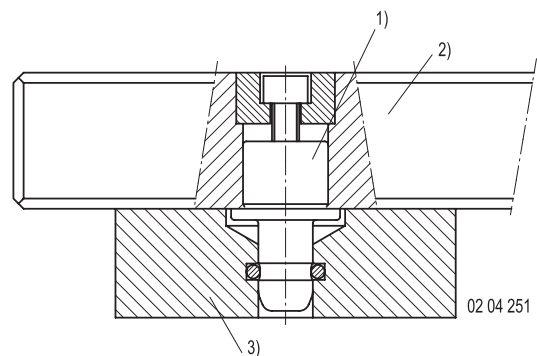
SPEEDY sealing plug for fast closing clamps 1000, 2000, 3000



Order no.	suitable for
704 094	SPEEDY 1000
704 095	SPEEDY 2000
704 096	SPEEDY 3000

Accessory	Wing handle
Order no.	to pull off sealing plug for
704 094-01	SPEEDY 1000, 2000, 3000

Protection during transport of retractible nipples in the pallet



- 1) Retraction nipple
- 2) Pallets
- 3) Transport and bearing protection

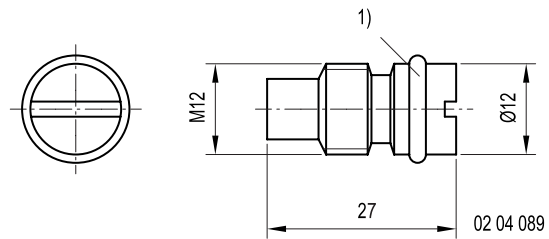
Order no.	suitable for
704 130	Nipple, SPEEDY 1000
704 133	Nipple, SPEEDY 2000
704 131	Nipple, SPEEDY 3000

Using transport protection caps safeguards the nipples and pallet surfaces during transportation and also makes the pallets stackable.

Material: Plastics



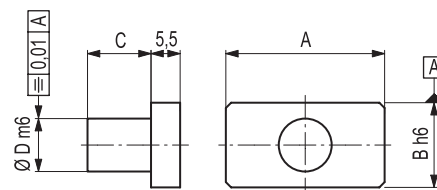
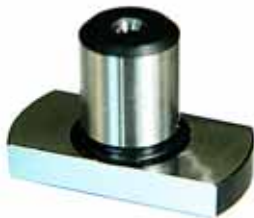
Lock stopper for perforation variations C / D / E



1) O-ring

Order no.	Description
904 403	Lock stopper for perforation variations C / D / E

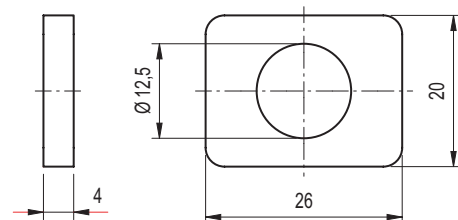
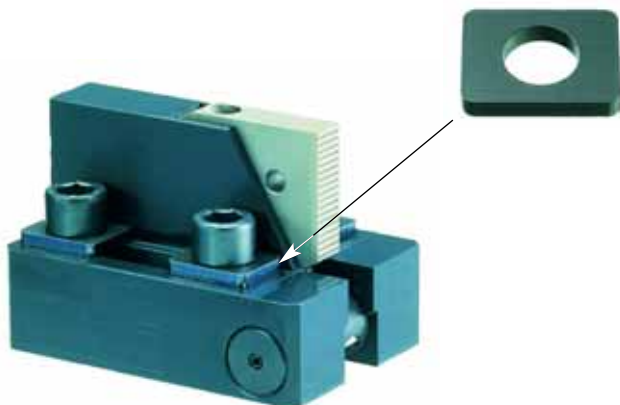
Sliding block with pin (to position in the T-groove)



02 04 107

Order no.	A	B	C	ØD
704 160	20	12	9	6
704 161	30	14	12	10
704 162	40	14	15	12
704 163	50	18	19	16
704 164	20	14	9	6
704 165	30	20	15	10
704 166	30	20	18	12
704 167	30	20	24	16

Washers for clamping devices



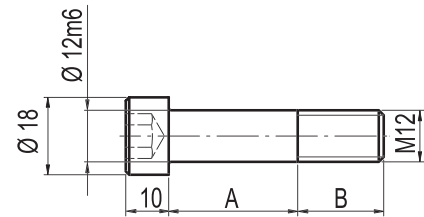
02 04 091

Order no.	Description
704 020	Washer for clamping devices

01/2007



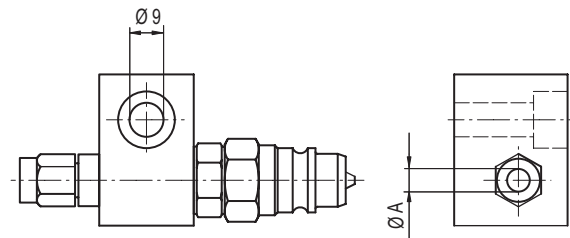
Precision collar bolt



02 04 111

Order no.	A	B
704 051	15	20
704 052	20	20
704 053	25	20
704 054	30	20
704 055	35	20
704 056	40	20
704 057	45	20
704 058	50	20

Connection block complete

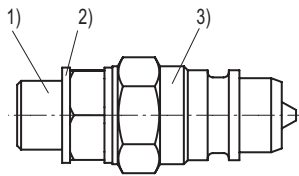


02 04 092

Order no.	ØA	suitable for
804 370	6	SPEEDY 1000 + 2000
804 385	8	SPEEDY 3000



Coupling

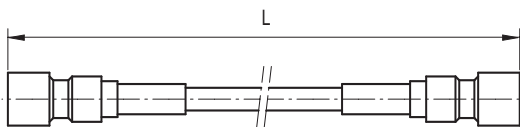


02 04 093

- 1) Double nipple
- 2) Sealing washer
- 3) Coupling

Order no.	Description
804 371	Hydraulic coupler, Gromelle HA 5012 VT
804 372	Dual steel nipple 1/4" - 1/4"
804 395	Aluminium protecting cap

Hydraulic hose with couplings

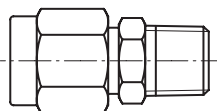


02 04 094

Order no.	L [m]	Description
704 150	1,5	Hydraulic couplers on both sides Gromelle HA 5011 MT

Other length upon request.

Connecting parts together with screw-on nipple

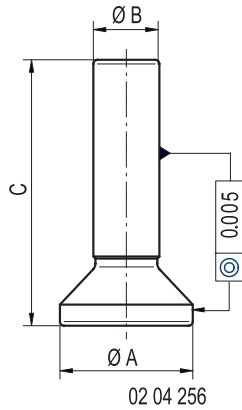


02 04 095

Order no.	Description	suitable for
804 374	SO 41121-8-1/4" with reduced brass clamping ring \varnothing 6	SPEEDY 1000 + 2000
804 375	SO 41121-6-1/8"	SPEEDY 1000 + 2000
804 386	SO 41121-10-1/4" with reduced brass clamping ring \varnothing 8	SPEEDY 3000
804 387	SO 41121-8-1/4"	SPEEDY 3000



Positioning nipple

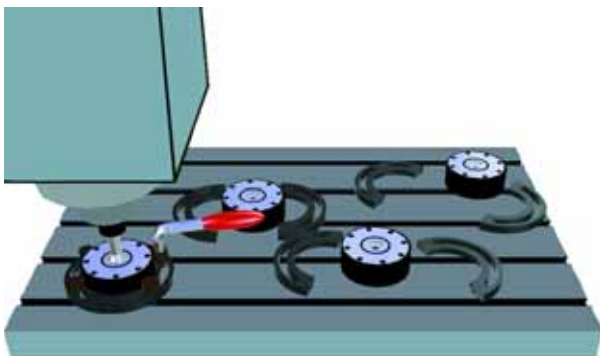


For a quick and precise positioning of the SPEEDY fast closing clamps on the machine table.

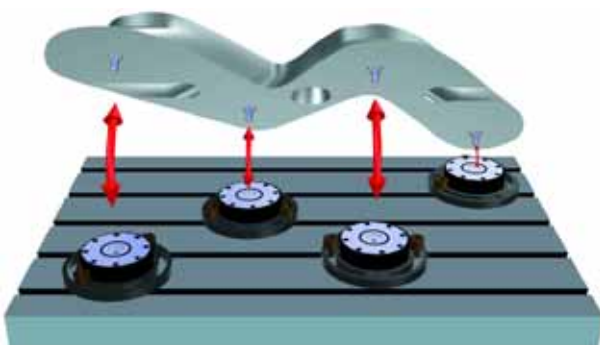
The positioning nipple is first set into the clamping jaws. Then the coordinate table is moved to the desired X/Y position and the positioning nipple is loosely inserted with " $\varnothing A$ " into the fast closing clamp on the machine table. This makes positioning the SPEEDY very precise.

Order no.	$\varnothing A$	$\varnothing B$	C	suitable for
804 259	32	16	64	SPEEDY 1000
804 258	47	25	82	SPEEDY 2000
804 260	65	32	100	SPEEDY 3000

Example of use



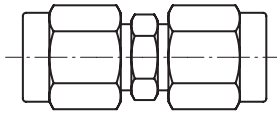
Position closing clamps and fasten them with the aid of the mounting brackets.



Mounting of the work piece.

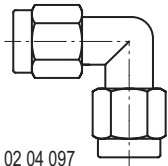


Straight screw connection



Order no.	Description	suitable for
804 379	SO 41021-8 with reduced brass clamping ring $\varnothing 6$	SPEEDY 1000 + 2000
804 388	SO 41021-10 with reduced brass clamping ring $\varnothing 8$	SPEEDY 3000

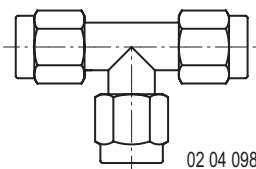
90° screw connection



02 04 097

Order no.	Description	suitable for
804 380	SO 42021-8 with reduced brass clamping ring $\varnothing 6$	SPEEDY 1000 + 2000
804 389	SO 42021-10 with reduced brass clamping ring $\varnothing 8$	SPEEDY 3000

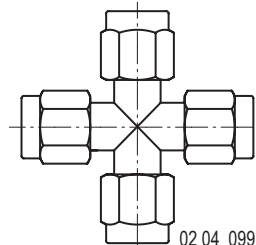
T-screw connection



02 04 098

Order no.	Description	suitable for
804 381	SO 43021-8 with reduced brass clamping ring $\varnothing 6$	SPEEDY 1000 + 2000
804 390	SO 43021-10 with reduced brass clamping ring $\varnothing 8$	SPEEDY 3000

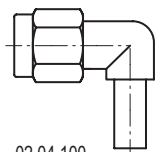
Cross connection



02 04 099

Order no.	Description	suitable for
804 382	SO 44021-8 with reduced brass clamping ring $\varnothing 6$	SPEEDY 1000 + 2000
804 391	SO 44021-10 with reduced brass clamping ring $\varnothing 8$	SPEEDY 3000

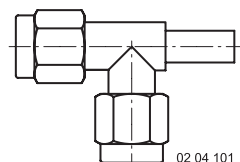
Adjustable 90°



02 04 100

Order no.	Description	suitable for
804 376	SO 42621-6-A6	SPEEDY 1000 + 2000

Adjustable-T

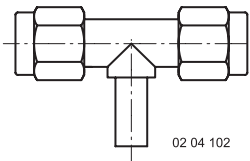


02 04 101

Order no.	Description	suitable for
804 377	SO 43621-A6-6-6	SPEEDY 1000 + 2000

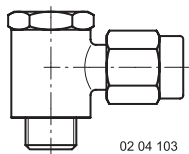


Adjustable-T



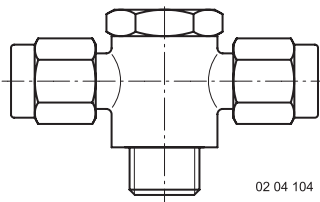
Order no.	Description	suitable for
804 378	SO 43621-6-A6-6	SPEEDY 1000 + 2000

Swivel screw connector



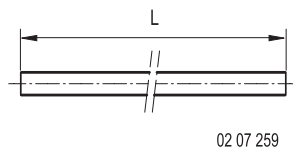
Order no.	Description	suitable for
804 392	SO 42824-8-1/4"	SPEEDY 3000

T-Swivel screw connector



Order no.	Description	suitable for
804 393	SO 43824-8-1/4"	SPEEDY 3000

Brass pipe for SPEEDY assembly (for a freely selectable bore hole gauge)



Order no.	Description	suitable for
804 398	Brass pipe ø 6/4mm, 1000 mm	SPEEDY 1000/2000

Order no.	Description	suitable for
804 399	Brass pipe ø 6/4mm, 1500 mm	SPEEDY 1000/2000

Service - set (the set of seals includes all O-rings and sealing rings)

Order no.	Description	suitable for
804 191	1000	SPEEDY 1000
804 192	2000	SPEEDY 2000
804 193	3000	SPEEDY 3000

Attention:

The fast closing clamp is always under spring pressure.

Basically, only authorized service technicians may perform any repair work at the fast closing clamps. During all work performed the required safety measures must be adhered to entirely and without exception.