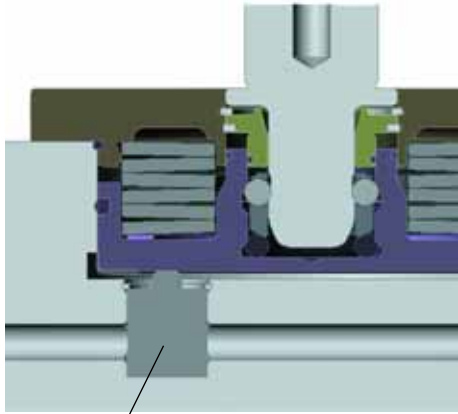


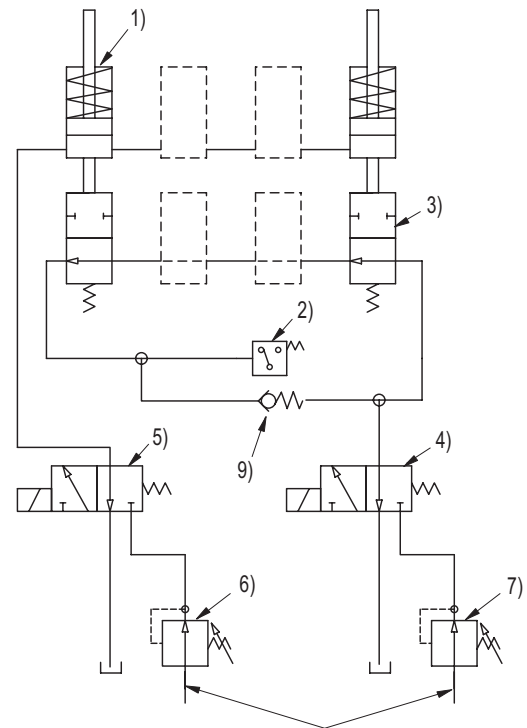


## Locking controls

### Mechanical locking control valves



Locking control valve



02 04 114

8)

- 1) SPEEDY
- 2) Pressure switch for clamp signal
- 3) Clamp control valve
- 4) Hydraulic valve for clamp control
- 5) Hydraulic valve to release SPEEDY
- 6) Pressure limiting valve, 40 bar
- 7) Pressure limiting valve, 8 bar
- 8) Lubrication from the machine
- 9) Check valve (bypass)

11

Order no.	Description
<b>704 210</b>	Locking control valve

Further check variations upon request.



Clamp control is mandatory for all rotation machines according to DIN-regulations.

Surface plate with SPEEDY 2000 and clamp control valve.

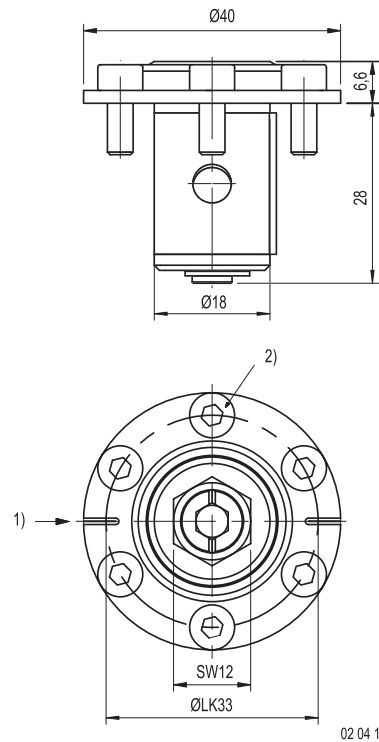


## Shut-off valve for installation in fast closing clamp-plates



Shut-off valve for installation in fast closing clamp-plates to shut off individual clamping circuits.

Order no.	Description
<b>804 799</b>	Shut-off valve
	Key included

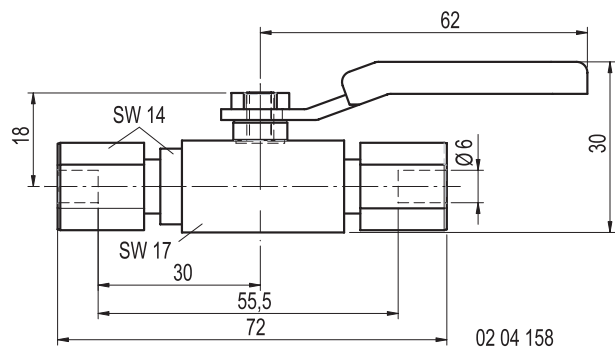


- 1) Mark for flow
- 2) Fillister-head screws M4

## Control valve with ball valve to piping Ø 6/4



Order no.	Description
<b>999 104</b>	Control valve with ball valve to piping



SPEEDY 1000 assembly, 8-fold with pipe system and shut off valve to shut off clamping circuits.