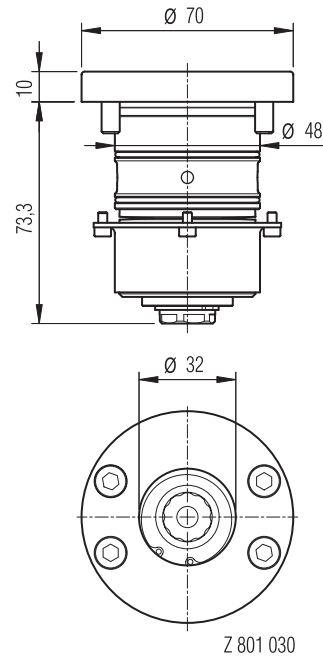




SPEEDY Compact 1000 assembly

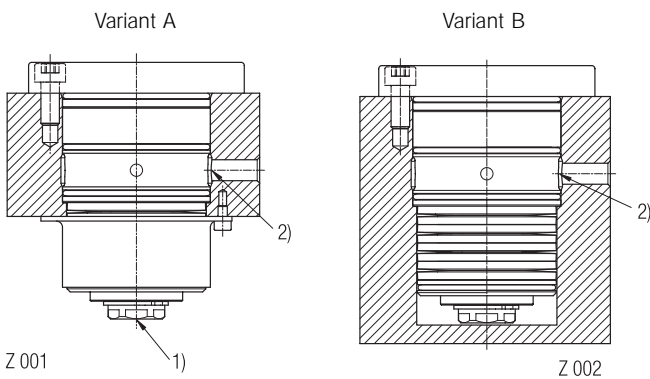


Z 801 030

Order no.	Insertion force [N]	Release hydr. pressure [bar]
801 030	6.500	180

7

Mounting examples



- 1) Hydraulic thread connection G1/8"
- 2) Hydraulic connection by deep holes



Planslice with SPEEDY Compact 1000

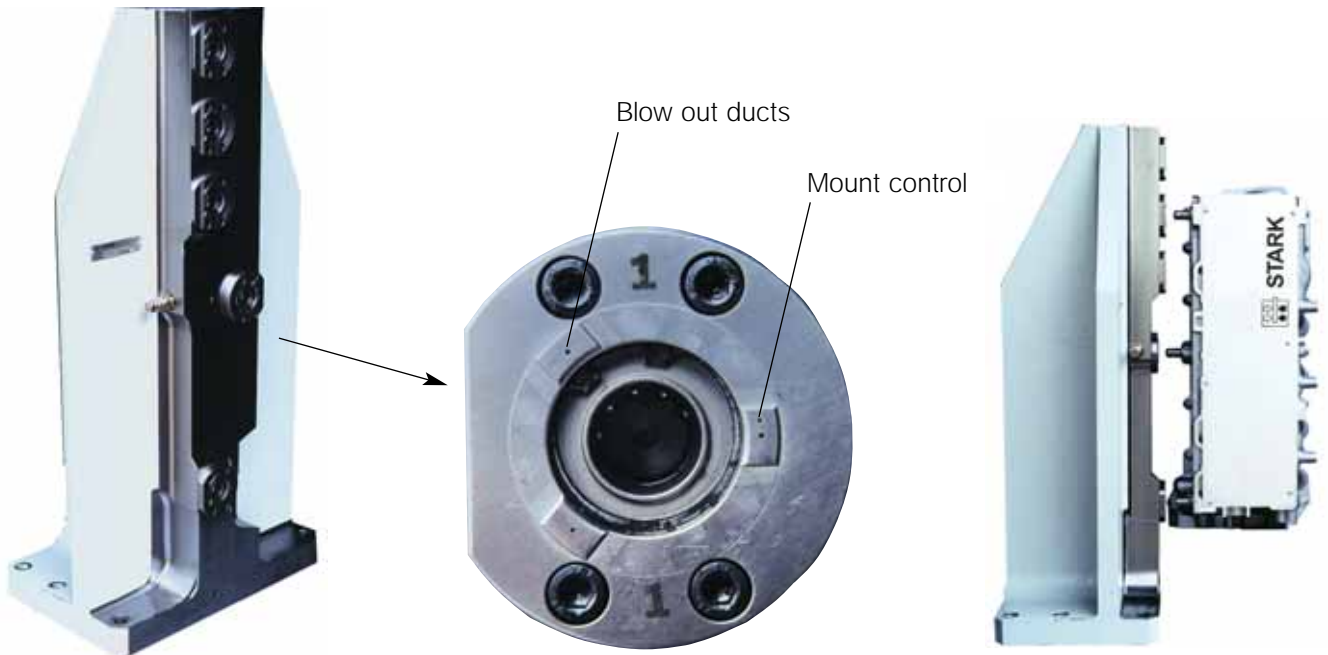
Advantages:

- small layout pattern
- at limited distance to edge of plate
- completely retractable
- can also be applied with small material thickness



SPEEDY Compact 1000 assembly with blow out ducts and mount control

7



Customized: with blow out ducts and mount control



Mount retractable nipples (direct clamping of workpiece)

The retractable nipples are tightened with a torque wrench

