



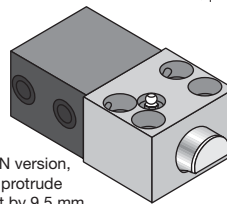
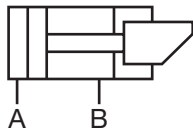
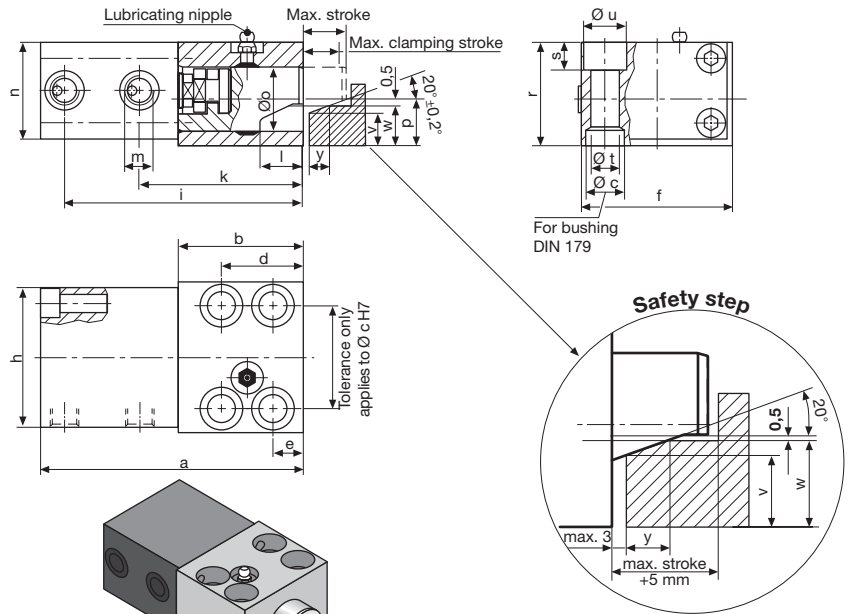
Wedge clamp with safety step

A high degree of safety:

This design features a clamping bolt with an additional accommodation surface, which is parallel to the clamping edge.

Should the pressure drop (machine failure or standstill), the upper die will lower onto the safety step where it is safely held in position.

Resistant to temperatures of up to 160°C (higher temperatures on request)



* In the case of the 25 kN version, the lubricating nipples protrude by 5 mm and are offset by 9.5 mm

Preferably to be used on the slide!

*Clamping force **permissible retention force (for details, see 2-2400, page 2)

Max. clamping force*	(kN)	25	50	100	160	250	400	630
Perm. operating pressure**	(kN)	35	65	130	210	320	520	820
Screw property class 8.8								
Max. operating pressure	(bar)	350	275	350	350	350	350	350
Cylinder Ø	(mm)	25	40	50	63	80	100	125
Max. stroke	(mm)	20	25	25	30	32	40	40
Clamping stroke	(mm)	15 - 18	18 - 22	19 - 22	23 - 27	24 - 29	30 - 36	30 - 36
Max. oil consumption	(cm ³)	10	31	49	94	161	314	491
a	(mm)	122	157	190	227	267	310	375
b	(mm)	58	78	100	125	150	180	225
Ø c H7 x depth	(mm)	18/7	26/9	30/11	35/11	48/13	55/16	62/16
d	(mm)	38	46	58	75	78	95	108
e	(mm)	14	16	20	25	26	32	38
f	(mm)	70	95	120	150	200	240	280
g	(mm)	48	65	85	106	140	180	210
h	(mm)	65	85	100	125	160	200	230
i	(mm)	111	146	177	210	246	285	344
k	(mm)	76	102	127	151	184	215	272
l	(mm)	20	25	26	32	40	45	50
m	(mm)	G 1/4	G 1/4	G 1/4	G 1/2	G 1/2	G 1/2	G 1/2
n	(mm)	45	63	75	95	120	150	180
Ø o	(mm)	30	40	55	70	80	100	125
p	(mm)	21,5	28	37	49	55	75	85
r	(mm)	48	65	80	105	125	160	190
s	(mm)	13	18	20	26	32	38	44
Ø t	(mm)	13	17	21	26	33	39	45
Ø u	(mm)	20	26	32	40	48	57	66
v	(mm)	15	18	25	30	30	50	60
w	(mm)	17,5	21,2	28,2	34,7	35,8	57,8	67,8
y	(mm)	7	9	10	14	14	20	21
Screw DIN 912-8.8 (4 pcs.)		M 12	M 16	M 20	M 24	M 30	M 36	M 42
Tightening torque	(Nm)	86	210	410	710	1450	2520	4050
Weight	(kg)	2,4	5,8	10,6	21	40	74	125
Part no.		8.2403.1000	8.2404.1000	8.2405.1000	8.2406.1000	8.2407.1000	8.2408.1000	8.2409.1000
Accessories								
Bushings DIN 179		12 x 12	17 x 16	21 x 20	26 x 20	32 x 25	38 x 30	44 x 30
Part no.		3300 285	3300 287	3300 288	3300 289	3300 420	3300 430	3300 440



HILMA

Wedge clamp with safety step + position monitoring

A high degree of safety:

This design features a clamping bolt with an additional accommodating surface which is parallel to the clamping edge. Should the pressure drop (machine failure or standstill), the upper die will lower onto the safety step where it is safely held in position.

Resistant to temperatures of up to 100°C***

Cable length: 250 mm

4-pole plug

Pin assignment:

2 = white, S2

3 = blue -

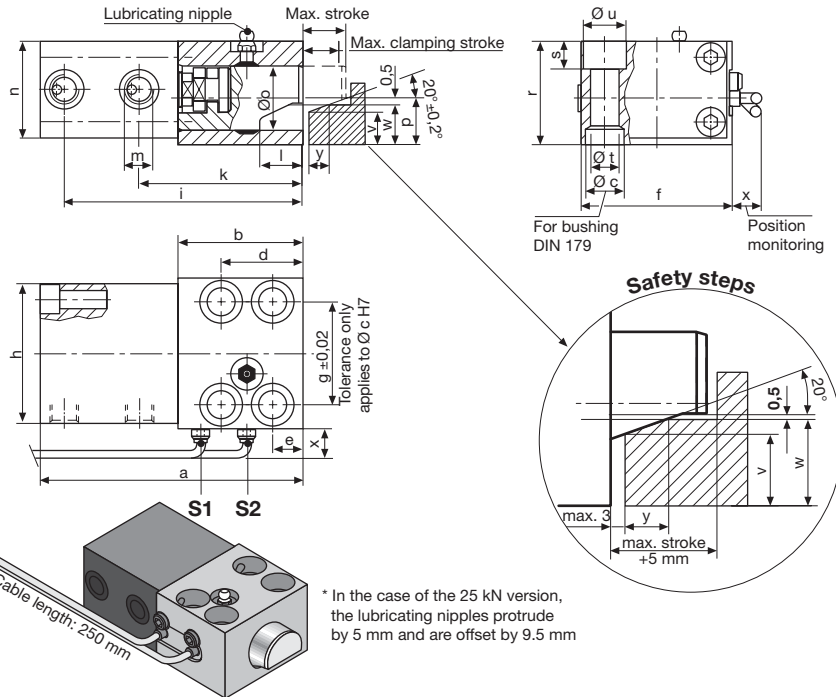
1 = brown +

4 = black, S1

Connecting lead with screw coupling:

Cable length 5 m - **part no. 5700013**

Cable length 10 m - **part no. 5700014**



*Clamping force **permissible retention force (for details, see 2.2400, page 2), *** 120°C for 1000 working hours

Max. clamping force*	(kN)	25	50	100	160	250	400	630
Perm. operating pressure**	(kN)	35	65	130	210	320	520	820
Screw property class 8.8								
Max. operating pressure	(bar)	350	275	350	350	350	350	350
Cylinder Ø	(mm)	25	40	50	63	80	100	125
Max. stroke	(mm)	20	25	25	30	32	40	40
Clamping stroke	(mm)	15 - 18	18 - 22	19 - 22	23 - 27	24 - 29	30 - 36	30 - 36
Max. oil consumption	(cm ³)	10	31	49	94	161	314	491
a	(mm)	122	157	190	227	267	310	375
b	(mm)	58	78	100	125	150	180	225
Ø c H7 x depth	(mm)	18/7	26/9	30/11	35/11	48/13	55/16	62/16
d	(mm)	38	46	58	75	78	95	108
e	(mm)	14	16	20	25	26	32	38
f	(mm)	70	95	120	150	200	240	280
g	(mm)	48	65	85	106	140	180	210
h	(mm)	65	85	100	125	160	200	230
i	(mm)	111	146	177	210	246	285	344
k	(mm)	76	102	127	151	184	215	272
l	(mm)	20	25	26	32	40	45	50
m	(mm)	G 1/4	G 1/4	G 1/4	G 1/2	G 1/2	G 1/2	G 1/2
n	(mm)	45	63	75	95	120	150	180
Ø o	(mm)	30	40	55	70	80	100	125
p	(mm)	21,5	28	37	49	55	75	85
r	(mm)	48	65	80	105	125	160	190
s	(mm)	13	18	20	26	32	38	44
Ø t	(mm)	13	17	21	26	33	39	45
Ø u	(mm)	20	26	32	40	48	57	66
v	(mm)	15	18	25	30	30	50	60
w	(mm)	17,5	21,2	28,2	34,7	35,8	57,8	67,8
x Position monitoring	(mm)	12	5	0	0	0	0	0
y	(mm)	7	9	10	14	14	20	21
Screw DIN 912-8.8 (4 pcs.)		M 12	M 16	M 20	M 24	M 30	M 36	M 42
Tightening torque	(Nm)	86	210	410	710	1450	2520	4050
Weight	(kg)	2,4	5,8	10,6	21	40	74	125
Part no.		8.2403.2000	8.2404.2000	8.2405.2000	8.2406.2000	8.2407.2000	8.2408.2000	8.2409.2000
Accessories								
Bushings DIN 179		12 x 12	17 x 16	21 x 20	26 x 20	32 x 25	38 x 30	44 x 30
Part no.		3300 285	3300 287	3300 288	3300 289	3300 420	3300 430	3300 440

2.24004

03/2006

Hilma-Römheld GmbH

Schützenstraße 74 · D-57271 Hilchenbach

Phone +49 (0) 2733 / 281-0 · Fax +49 (0) 2733 / 281-113 · www.hilma.de

Subject to technical modification