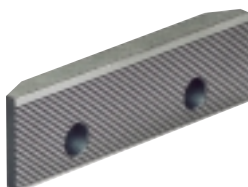
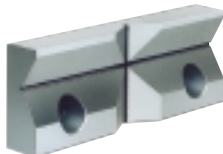


Accessories for jaws

Standard jaws



Step jaw insert for type NC

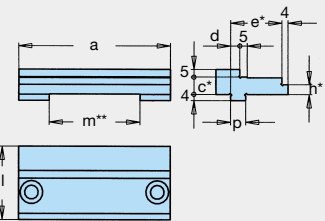
for achieving very large clamping widths.



for fixed jaw Part no.	for slide Part no.	a	c	d	e	h	l	m	p
9.3284.0201	9.3284.1201	100	11,5	6	34	6,5	48	60	10h6
9.3284.0301	9.3284.1301	125	14	6	40	9	58	65	12h6
9.3284.0401	9.3284.1401	160	17	8	43	12	64	88	18h6

* = Tolerance ± 0.01 mm,

** = Step jaw insert for slide only



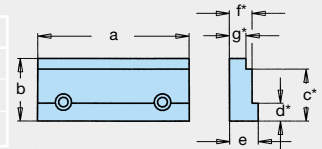
Precision step jaw for types EL, NC, KNC

for clamping rectangular workpieces without parallel pads.

These jaws allow holes to be drilled near the edge. Used in pairs only.

Part no.	a	b	c	d	e	f	g
5.2082.0001	100	34	29	10	19	15	11
5.2082.0002	125	45	39	13	25	20	16
5.2082.0003	160	54	45	15	25	20	16

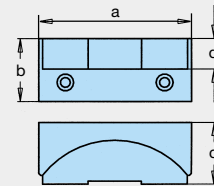
* = Tolerance ± 0.01 mm



Pendulum jaw for types EL, NC, KNC

for clamping one workpiece with nonparallel clamping surfaces or two workpieces with different tolerances.

Part no.	a	b	c	d
8.3711.0208	100	34	35	16
8.3711.0308	125	45	50	22
8.3711.0408	160	54	55	26

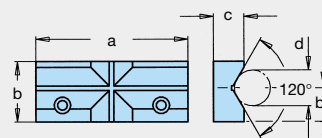


Vee jaw for types EL, NC, KNC

for horizontal and vertical clamping of cylindrical workpieces.

Part no.	a	b	b1	c	d
5.3030.0002	100	34	19	17	8 - 35
5.3030.0003	125	45	27	19	10 - 50
5.3030.0004	160	54	32	21	12 - 60

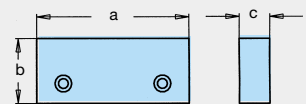
Vee tolerance ± 0.01 mm



Clamping jaw, soft for types EL, NC, KNC

16 MnCr5, supplied oversize, for preparation of specific jaws by the customer.

Part no.	a	b	c
5.2055.0097	100	36	20
5.2055.0098	125	47	25
5.2055.0099	160	56	30

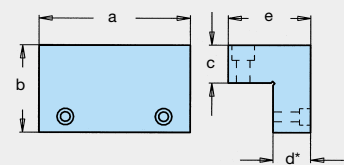


Clamping jaw, extra high for types EL, NC

for the safe clamping of high workpieces. Used as single jaw or in pairs.

Part no.	a	b	c	d	e
9.3283.0201	100	58	25	25	60
9.3283.0301	125	75,5	32	32	74
9.3283.0401	160	92,5	40	40	100

* = Tolerance ± 0.01 mm



Clamping jaw, extra large for types EL, NC, KNC

for the safe clamping of workpieces exceeding the standard jaw width. Used in pairs only.

Part no.	a	b	c	d
5.2058.1025	100	34	13	125
5.2058.1026	125	45	15	160
5.2058.1027	160	54	20	200

* = Tolerance ± 0.01 mm

